



DIAPHRAGM SEAL

## BC11 SERIES SANITAR

## DIAPHRAGM SEALS, UNION NUT

MODEL :BC11

---



### Application:

BC11 is sanitary diaphragm seal . The Diaphragm is flush welded to the body construction. It is mostly used in food and beverage industries , food industries , water processings and otherswhere hygienic process condition are required.



### Specification :

Capillary , 1/2"BSP female 1-1/2"

### Process conection:

Process temperature : -45+150 C

Filling liquid :silicone oil , vegetable oil

Pressure rang : 0-40bar

**Material :**

Diaphragm: SS 316L, SS316L PTFE coating ,

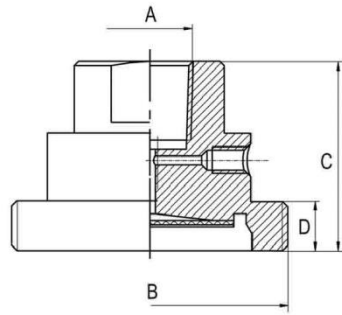
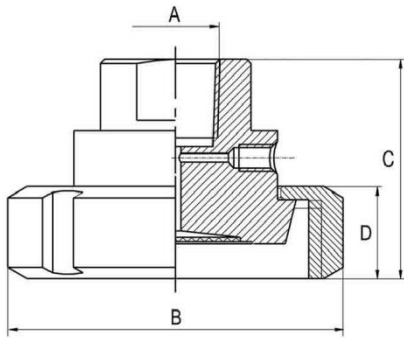
SS316 L Teflon lined , HC,TIetc

Body: SS316, SS304

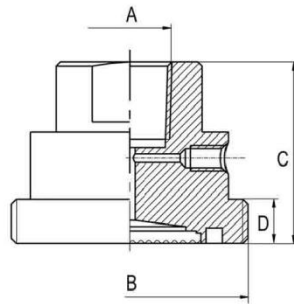
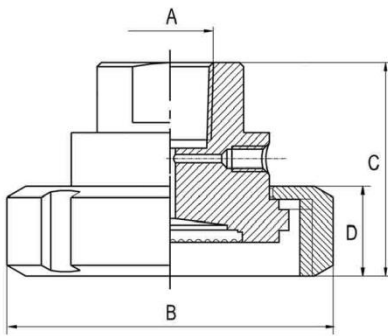
Instrument connection :SS316,SS316 L

Union nut :SS316

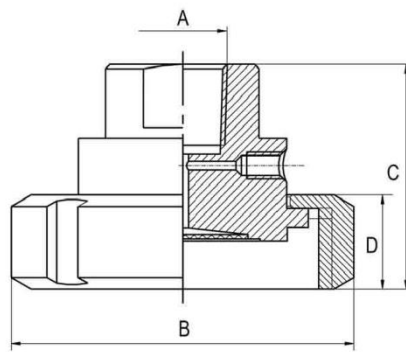
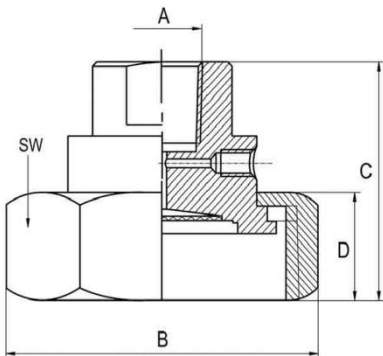
**DIMENSION**



Model	DN (mm)	A	B	C	D	Weight
BC 11	DN25	G½	61	50	21	0.48
	DN32	G½	68	50	21	0.58
	DN40	G½	76	50	21	0.65
BC 11	DN50	G½	90	50	22	0.97
	DN32	G½	58 x 1/6	50	14	0.52
	DN40	G½	65 x 1/6	50	14	0.62
	DN50	G½	78 x 1/6	50	50	0.93



Model	DN (mm)	A	B	C	D	Weight
BC 11	1"	G½	50	50	25	0.25
	1½"	G½	72	50	25	0.80
	2"	G½	82	50	26	0.98
	1½"	G½	60 x 1/6	50	15	0.76
	2"	G½	70 x 1/6	50	15	0.92



Model	DN (mm)	A	B	C	D	Weight
BC 11	1½"	G½	68	55	20	0.70
	2"	G½	82	56	22	0.92
	1½"	G½	65	50	28	0.65
	2"	G½	76	50	29	1.08