



**BOURDON TUBE  
PRESSURE GAUGE**

**G-S.SERIES STANDARD LIQUID  
FILLABLE GAUGE WITH DIN BAYONET RING  
MODEL:GS1301**



**Applications:**

1301 series pressure gauge is for heavy industrial applications where the media or the environment contains chemically aggressive substances. The gauge is filled with liquid for dampening mechanical vibrations.

**Specifications:**

**Nominal sizes:**

2.5" , 4" , 6"

**Accuracy:**

2.5": +/-1.6%

4" , 6": +/-1.0%

**Scale Range, according to EN 837-1/5**

Pressure ranges: 0 to 0/9/1/1.6/2.5/4/6/10/16/25/40/60/100/160/250/400/600/1000 bar

Vacuum range: -1 to 0 bar

Compound pressure: -1 to 0/6/1.5/3/5/9/15/24 bar

**Operating Temperature:**

Ambient: -40 °C to 60 °C, medium: 200 °C maximum

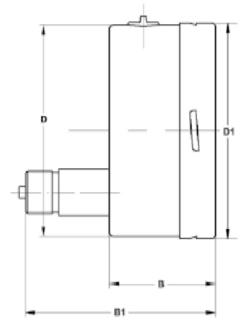
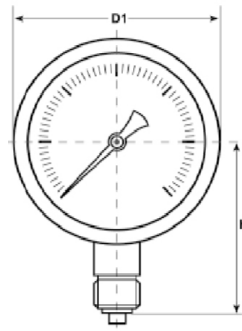
**Material Specification:**

Case: 304 stainless steel case and flat bayonet ring window: laminated safety glass wetted parts: 316 stainless steel bourdon tube and connection, TIG welding between case

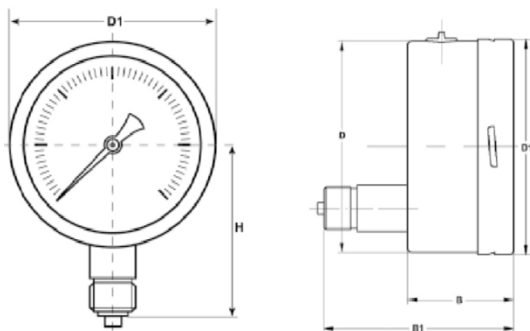
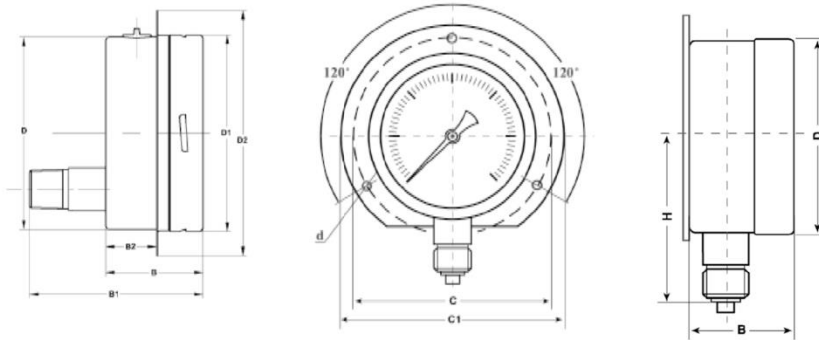
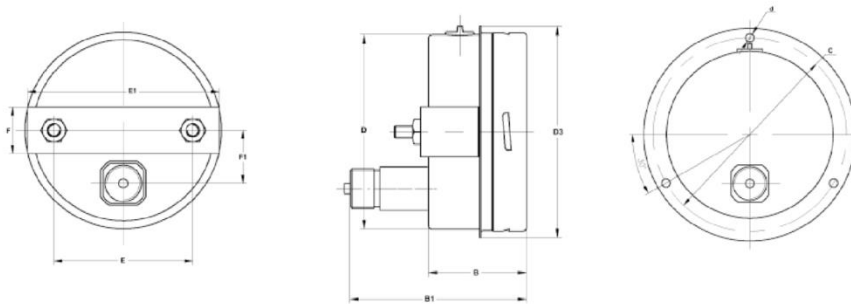
and connection, square connection  
 Movement: 304 stainless steel  
 Standard filling: glycerin

**Options:**

NPT, BSPT or other process connection  
 Restrictor  
 Double dial range or other dial ranges  
 Silicone oil filling  
 Refrigeration scale



**DIMENSION:**



DIAL SIZE	D	D1	D2	D3	H	B	B1	C	C1	E	E1	F	F1	d
2.5"	62	64	85	--	54	34	57	Ø77	Ø85	--	--	-	--	Ø3.5
4"	99	101	128	107.5	83	50	83	Ø118.5	Ø128	76	76	25.5	29	Ø5
6"	147	149	--	--	108	50	83	Ø161	Ø181	--	--	--	--	Ø5

dimensions are approximate and can be changed without prior notice